

**When you receive delivery of your surge protection device, please have it installed by a qualified electrician and send us proof of installation by completing and returning the accompanying documents to [surgedevice@hollard.co.za](mailto:surgedevice@hollard.co.za)**

## FINDING AN ELECTRICIAN

As Surgetek is purely a specialist supplier of lightning/surge products, we propose that you either have your own electrician install the surge protection device, or find a local electrician either through the Electrical Contractors Board (ECB), the Electrical Contractors Association (ECA) or SED Partners.

### How to locate an electrician on the ECB website

Go to [www.ecbsa.co.za](http://www.ecbsa.co.za)

- Click on Search Contractor
- Select your province from the drop down and type in the name of your area
- Click on Submit
- Select an electrician of your choice from those that appear on the screen.

### How to locate an electrician on the ECA website

Go to [www.ecasa.co.za](http://www.ecasa.co.za)

- Click on Interactive
- Click on Simple Online Directory
- Choose an area closest to you from the dropdown box
- Select an electrician of your choice.

### How to locate an electrician through SED partners

- Call 0861 SED SED/0861 733 733
- Email [surge@sedpartners.co.za](mailto:surge@sedpartners.co.za)
- [www.sedpartners.co.za](http://www.sedpartners.co.za)

## INSTALLATION PROCESS – NOTES FOR ELECTRICIAN

See examples (next page) of how photographs of the installation should be taken.

### Pre-fusing of surge devices

When surge devices are installed in systems with a main breaker larger than **250 Amps** or **5kA fault current**, they should be pre-fused to prevent the units creating a hazard when subjected to high fault currents. This is because surge arresters are connected directly to the incoming supply and thus have no means of extinguishing the arc should they become conductive under electrical fault conditions.

For Class 2 surge devices we recommend that 125A fuses, of the same fault current rating or larger than that of the board, be installed in series with the surge devices to disconnect the surge devices under fault conditions.

These fuses **have nothing to do with the normal operation of the surge devices** but are purely for electrical safety.

### Wiring

The wires used for the installation of the surge protection devices should be at least six (6) millimetres (mm) thick.

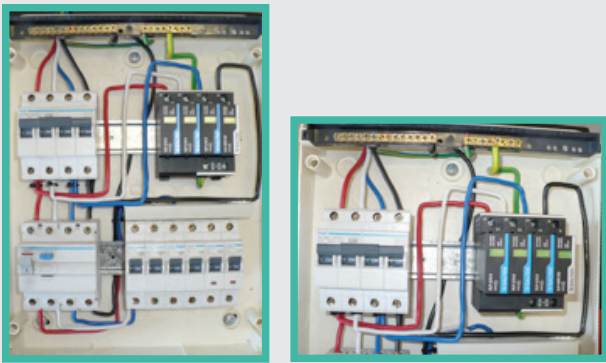
## SENDING HOLLARD PROOF OF INSTALLATION

After the electrician has installed the surge device in your electrical distribution board, you will be required to forward photographs of the installation to us, showing emphasis on the wiring. Please inform the electrician of this requirement before the installation.

See examples (below) of how photographs of the installation should be taken.

Please take a clear photograph clearly showing the wiring of the surge protection device.

- Photograph of the whole distribution board
- Photograph of the wiring of the surge protection device



These photographs are wrong as they are focused on the surge protection device and not on the wiring. As a result Surgetek cannot confirm if the surge protection device is wired correctly.

- Distribution board cover cannot be on in the picture
- Cannot see the wiring only the surge protection device



Please return the proof of installation form to [surgedevice@hollard.co.za](mailto:surgedevice@hollard.co.za).